

2023 OSH Inspection Coverage

696

OSH Inspectors

59,729

Number of Workplace
Inspections & Visits

845,354

Number of Enterprises
& Institutions
Employing Labor

1:16,448

Ratio of the Number
of Inspectors to the
Total Workforce

Innovative OSH Driver

Transforming from Traditional 3D ways to 3C

Our programs provide incentives to upgrade factories of metal casting, surface treatment, printing/dyeing /finishing, up to 66,000 \$USD for OSH equipment efficiency improvement and up to 16,000 \$USD for workplace environment modification, from a 3D of dirty, dangerous, and difficult, to becoming a 3C of clean; career, and competitive sectors

2030 Taiwan OSH Strategy: Minimizing Workplace Accidents by Half

▲ Reducing Collaboration

Utilizing cross-disciplinary governance to strengthen source management

▲ Supervision & Inspection

Improving the effectiveness of supervision and inspection

▲ Public-Private Partnership

Expanding the capacity of accident prevention partnerships

▲ Regulatory Framework

Enhancing accident prevention regulations and systems

▲ Safety Culture

Cultivating safety knowledge and culture



Occupational Safety and Health Administration, MOL

Switchboard : 886-8995-6666

Address : 242030 No.439, Zhongping Rd.,
Xinzhuang Dist., New Taipei City 242,
Taiwan (R.O.C.)

References

- 2011-2020 Taiwan OSHA 10-Year Documentary Journey
- Occupational safety and Health Administration, Ministry of Labor, Taiwan (ROC) <https://www.osha.gov.tw/>
- Statistics on Safety & Health at Work, International Labour Organization. <https://ilostat.ilo.org/topics/safety-and-health-at-work/>



**SCAN
FOR MORE**



**NATIONAL PROFILE OF
OCCUPATIONAL SAFETY
AND HEALTH**

TAIWAN

R.O.C.

圖片來源: <https://reurl.cc/O5p5kA>
臺北101, 臺北市, 交通部觀光署

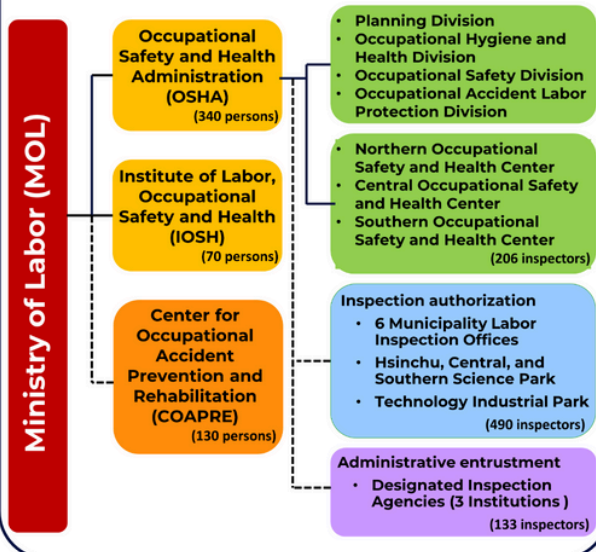
OSH Vision & Strategy

Triple Safety Policy



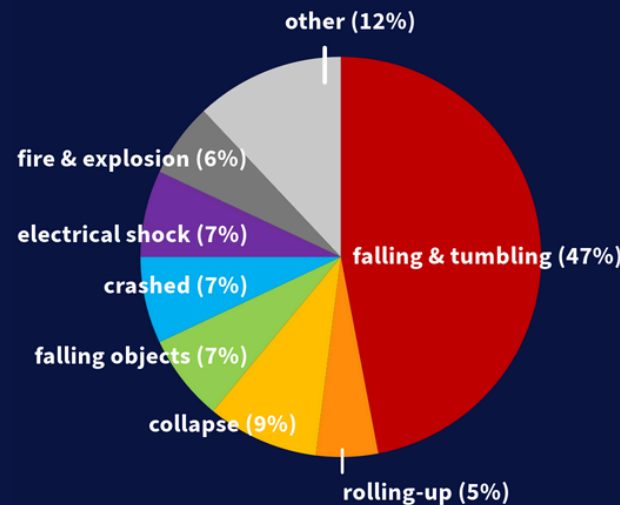
1. Continuously lowering occupational accident rates to protect basic labor human rights.
2. Creating a decent work environment to maintain the rights and interests and to ensure the physical and mental health of workers.
3. Optimizing the compensation, diagnosis and therapy, and rehabilitation systems for workers suffering from accidents.
4. Assisting industries in risk control, and promoting labor-management harmony and public safety.

OSH Official Organizational Chart



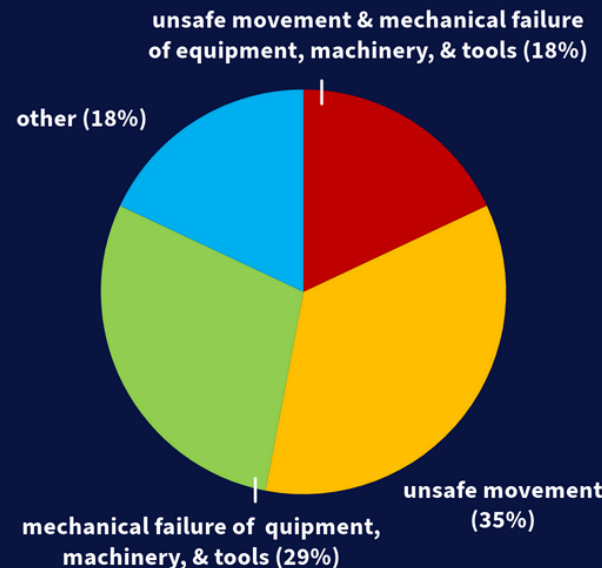
2023 Fatality Ratios by Injury Types in SOI*

*SOI: Severe Occupational Injuries

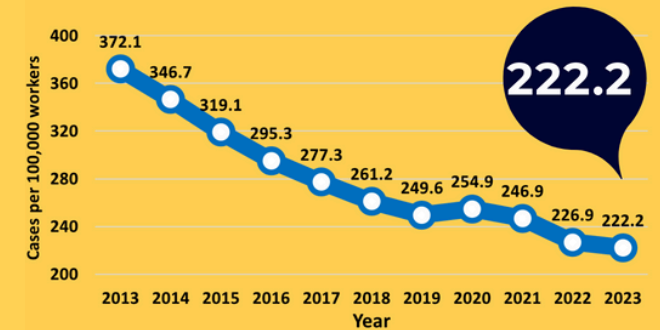


2023 Cases Ratios by Causes in SOI*

*SOI: Severe Occupational Injuries



2013-2023 National Occupational Accident Insurance Benefits

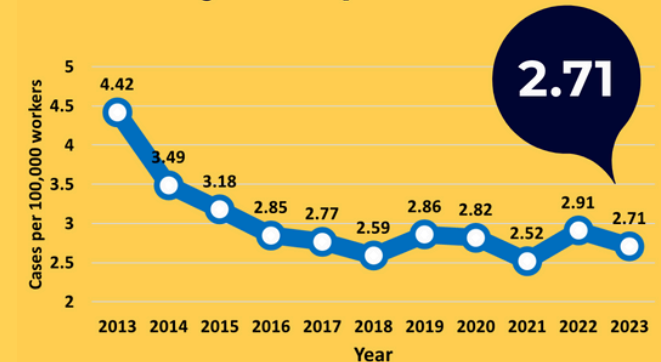


Occupational injury insurance benefit rate per 100,000 workers
 $= \frac{\text{Number of benefit cases}}{\text{Number of workers}} \times 100,000$
 (Total benefits for occupational disability, injury, and death)

Note:

1. Source: Bureau of Labor Insurance, Ministry of Labor.
2. Excludes traffic accidents not related to the performance of duties.

2013-2023 Occupational Fatal Injuries caused by Workplace Accidents



Occupational fatal injuries rate per 100,000 workers
 $= \frac{\text{Number of occupational injury deaths}}{\text{Number of workers}} \times 100,000$

Note:

1. Source: Occupational Safety and Health Administration, Ministry of Labor, and Directorate-General of Budget, Accounting and Statistics, Executive Yuan.
2. Excludes traffic accidents not related to the performance of duties.