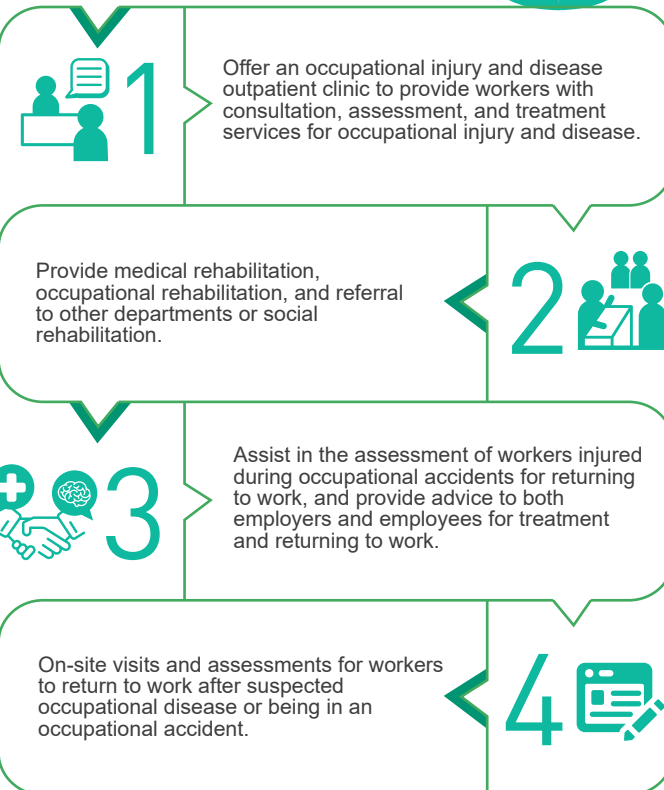


Occupational injury and disease diagnosis and treatment

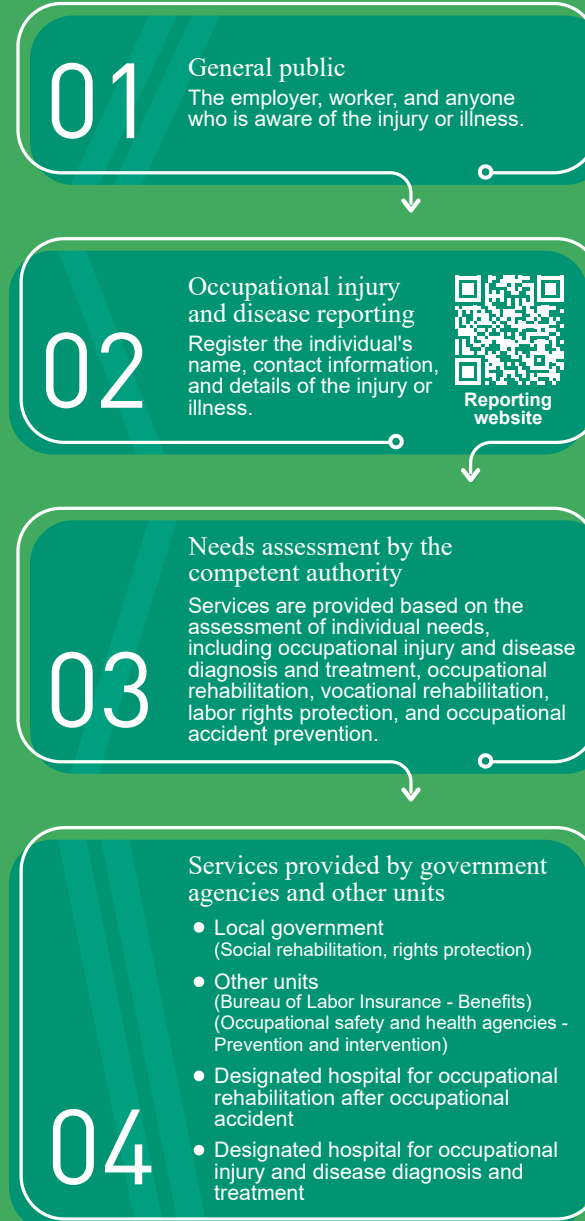
Designated hospital for occupational injury and disease diagnosis and treatment

The central competent authority may subsidize medical institutions that provide integrated diagnosis and treatment services and handle the reporting of occupational injuries and diseases.

Services:

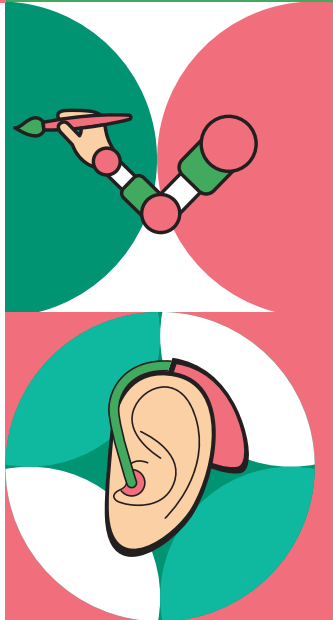


Occupational injury and disease reporting process



Occupational injury and disease diagnosis and treatment services

The Occupational Safety and Health Administration, Ministry of Labor cares about you



Contact number: (02) 8995-6666
Address: 11F, South Building, No. 439, Zhongping Rd., Xinzhuang Dist., New Taipei City
Website: www.osha.gov.tw

Compiled and printed in January 2026

Occupational injury and disease diagnosis and treatment

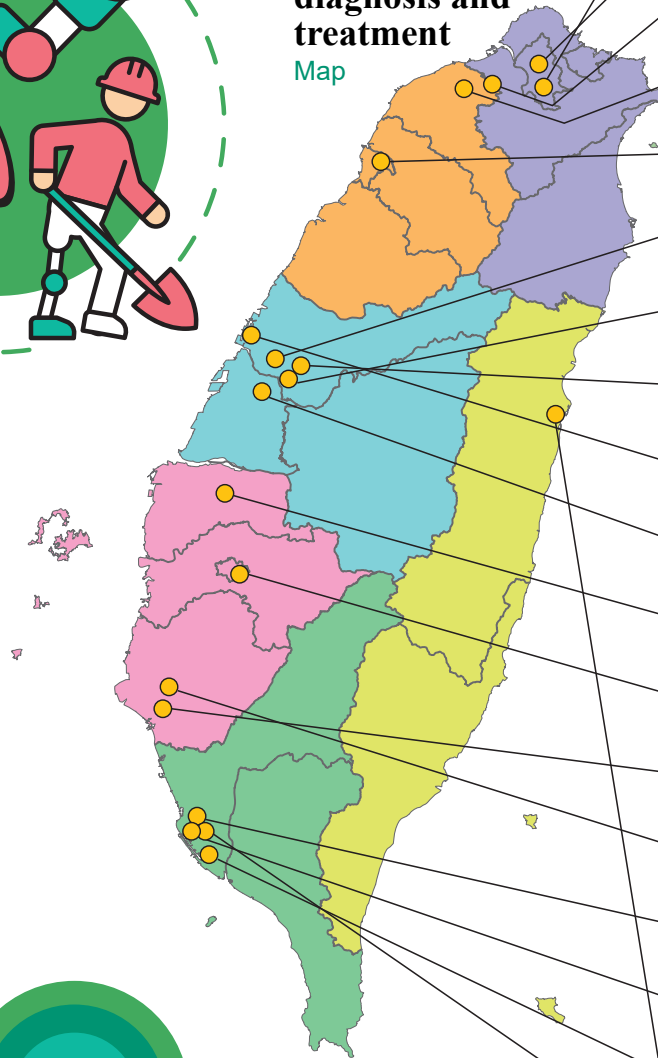
There are currently 19 designated hospital for occupational injury and disease diagnosis and treatment and over 90 hospitals in the diagnosis and treatment network.

Workers who need treatment for occupational injuries or illnesses and assistance with returning to work can access professional and appropriate services at a hospital nearby.

PS : If you think that you have a work-related illness, you can bring your certificate of diagnosis and your work experience to consult with a physician in the occupational medicine department of a designated hospital. If you are diagnosed with an occupational disease, you can apply to the Bureau of Labor Insurance for occupational injury and disease related insurance benefits.

Designated hospital for occupational injury and disease diagnosis and treatment

Map



National Taiwan University Hospital

(02)2312-3456 ext. 267491

Taipei Veterans General Hospital

(02)2875-7525 ext. 85532, 85533

Linkou Chang Gung Memorial Hospital

(03)328-1200 ext. 5201

Taoyuan General Hospital, Ministry of Health and Welfare

(03)369-9721 ext. 1218

NTU Hsin-Chu Hospital

(03)532-6151 ext. 523773, 523774

Taichung Veterans General Hospital

(04)2359-2525 ext. 3630

Chung Shan Medical University Hospital

(04)3609-7846

China Medical University Hospital

(04)2205-2121 ext. 12659, 12660

Tungs' Taichung MetroHarbor Hospital

(04)2658-1919 ext. 58230

Changhua Christian Hospital

(04)723-8595 ext. 4131

National Taiwan University Hospital Yunlin Branch

(05)633-0002 ext. 574801, 574802, 574804, 574800

St. Martin De Porres Hospital

(05)275-6000 ext. 3317, 3318

National Cheng Kung University Hospital

(06)235-3535 ext. 4939

Chi Mei Medical Center

(06)281-2811 ext. 53030

Kaohsiung Veterans General Hospital

(07)342-2121 ext. 75155

Kaohsiung Medical University Chung-Ho Memorial Hospital

(07)313-3604 ext. 41

Kaohsiung Municipal Siaogang Hospital (operated by Kaohsiung Medical University)

(07)803-6783 ext. 3358

Kaohsiung Chang Gung Memorial Hospital

(07)731-7123 ext. 8372

Hualien Tzu Chi Hospital

(03)856-1825 ext. 12144

